

IMPLEMENTATION OF DISTRIBUTED GENERATING SYSTEM UNDER STAND ALONE AND GRID CONNECTED MODE OF OPERATIONS

K Lakshmi prasanna
Assistant Professor, dept EEE,
Bharath Institute of Engineering and Technology, Hyderabad.

J. Manasa
Assistant professor, EEE department,
SJCET, Yemmiganur, Kurnool Dist, A.P.

Abstract

In this paper, a novel control strategy is proposed for inverters to simultaneously improve the power quality of the inverter local load voltage and the current exchanged with the grid. It also enables seamless transfer of the operation mode from stand-alone to grid-connected or vice versa. The control scheme includes an inner voltage loop and an outer current loop, with both controllers designed using the H_∞ repetitive control strategy. This leads to a very low total harmonic distortion in both the inverter local load voltage and the current exchanged with the grid at the same time. The proposed control strategy can be used to single-phase inverters and three-phase four-wire inverters. It enables grid-connected inverters to inject balanced clean currents to the grid even when the local loads (if any) are unbalanced and/or nonlinear. Experiments under different scenarios, with comparisons made to the current repetitive controller replaced with a current proportional-resonant controller, are presented to demonstrate the excellent performance of the proposed strategy.

I. INTRODUCTION

Decentralization of the power transmission distribution system is vital to the success and reliability of this system. Currently the system is reliant upon relatively few generation stations. This makes current systems susceptible to impact from failures not within said area. Micro grids would have local power generation, and allow smaller grid areas to be separated from the rest of the grid if a failure were to occur. Furthermore, micro grid systems could help power each other if needed. Generation within a micro grid could be a downsized industrial generator or several smaller systems such as photo-voltaic systems, or wind generation. When combined with Smart Grid technology, electricity could be better controlled and distributed, and more efficient.

Traditionally, the inverters used in micro-grids behave as current sources when they are connected to the grid and as voltage sources when they work autonomously. This involves the change of the controller when the operational mode is changed from stand-alone to grid-connected or vice versa. It is advantageous to operate inverters as voltage sources because there is no need to change the controller when the operation mode is changed. A parallel control structure consisting of an output voltage controller and a grid current controller was proposed in to achieve seamless

transfer via changing the references to the controller without changing the controller. Another important aspect for grid connected inverters or micro-grids is the active and reactive power control.

As nonlinear and/or unbalanced loads can represent a high proportion of the total load in small-scale systems, the problem with power quality is a particular concern in micro-grids. Moreover, unbalanced utility grid voltages and utility voltage sags, which are two most common utility voltage quality problems, can affect micro-grid power quality. The inverter controller should be able to cope with unbalanced utility grid voltages and voltage sags, which are within the range given by the waveform quality requirements of the local loads and/or micro-grids. When critical loads are connected to an inverter, severe unbalanced voltages are not generally acceptable, and the inverter should be disconnected from the utility grid. Only when the voltage imbalance is not so serious or the local load is not very sensitive to it can the inverter remain connected. Since the controllers designed in the dq or $\alpha\beta$ n frames under unbalanced situations become noticeably complicated, it is advantageous to design the controller in the natural reference frame.

Another power quality problem in micro-grids is the total harmonic distortion (THD) of the inverter local load voltage and the current exchanged with the grid (referred to as the grid current in this paper), which needs to be maintained low according to industrial regulations. It has been known that it is not a problem to obtain low THD either for the inverter local load voltage or for the grid current. However, no strategy has been reported in the literature to obtain low THD for both the inverter local load voltage and the grid current simultaneously. This may even have been believed impossible because there may be nonlinear local loads. In this paper, a cascaded control structure consisting of an inner-loop voltage controller and an outer-loop current controller is proposed to achieve this, after spotting that the inverter LCL filter can be split into two separate parts (which is, of course, obvious but nobody has taken advantage of it). The LC part can be used to design the voltage controller, and the grid interface inductor can be used to design the current controller. The voltage controller is responsible for the power quality of the inverter local load voltage and power distribution and synchronization with the grid, and the current controller is responsible for the power quality of the grid current, the power exchanged with the grid, and the over current protection. With the help of the H_∞ repetitive control, the proposed strategy is able to maintain low THD in both the inverter local load voltage and the grid current at the same time. When the inverter is connected to the grid, both controllers are active; when the inverter is not connected to the grid, the current controller is working under zero current reference. Hence, no extra effort is needed when changing the operation mode of the inverter, which considerably facilitates the seamless mode transfer for grid-connected inverters. For three-phase inverters, the same individual controller can be used for each phase in the natural frame when the system is implemented with a neutral point controller. As a result, the inverter can cope with unbalanced local loads for three-phase applications. In other words, harmonic currents and unbalanced local load currents are all contained locally and do not affect the grid.

It is worth stressing that the cascaded current-voltage control structure improves the quality of both the inverter local load voltage and the grid current at the same time and achieves seamless transfer of the operation mode. The outer-loop current controller provides a reference for the inner loop voltage controller, which is the key to allow the simultaneous improvement of the THD in the grid current and the inverter local load voltage and to achieve the seamless transfer of operation

mode. This is different from the conventional voltage-current control scheme [12], where the (inner) current loop is used to regulate the filter inductor current of the inverter (not the grid current), so it is impossible to achieve simultaneous improvement of the THD in the grid current and the inverter local load voltage. An inner current loop can still be added to the proposed structure inside the voltage loop without any difficulty to perform the conventional function, if needed. The H_∞ repetitive control strategy is adopted in the paper to design the controllers, but this is not a must; other approaches can be used as well. Repetitive control, which is regarded as a simple learning control method, provides an alternative to perfectly track periodic signals and/or to reject periodic disturbances in dynamic systems, using the internal model principle. The internal model is infinite dimensional and can be obtained by connecting a delay line into a feedback loop. Such a closed-loop system can deal with a very large number of harmonics simultaneously, as it has high gains at the fundamental and all harmonic frequencies of interest. It has been successfully applied to constant-voltage constant-frequency pulse-width modulated (PWM) inverters, grid-connected inverters, and active filters to obtain very low THD. The multi loop control strategies analyzed in indicated that it was impossible to stabilize an inverter with a proportional feedback of the capacitor voltage and that the performance with an inner loop proportional-derivative voltage controller was not good either.

This paper has demonstrated that excellent performance can be achieved with an inner-loop repetitive controller. The rest of this paper is organized as follows. The proposed control scheme is presented in Section II, followed by the voltage controller designed in Section III and the current controller designed in Section IV. An example design is described in Section V, and extensive experimental results are presented and discussed in Section VI. Finally, conclusions are made in Section VII.

II. PROPOSED CONTROL SCHEME

Fig. 1 shows the structure of a single-phase inverter connected to the grid. It consists of an inverter bridge, an LC filter, and a grid interface inductor connected with a circuit breaker. It is worth noting that the local loads are connected in parallel with the filter capacitor. The current i_1 flowing through the filter inductor is called the filter inductor current in this paper, and the current i_2 flowing through the grid interface inductor is called the grid current in this paper. The control objective is to maintain low THD for the inverter local load voltage u_o and, simultaneously, for the grid current i_2 . As a matter of fact, the system can be regarded as two parts, as shown in Figs. 2 and 3, cascaded together. Hence, a cascaded controller can be adopted and designed. The proposed controller, as shown in Fig. 4, consists of two loops: an inner voltage loop to regulate the inverter local load voltage u_o and an outer current loop to

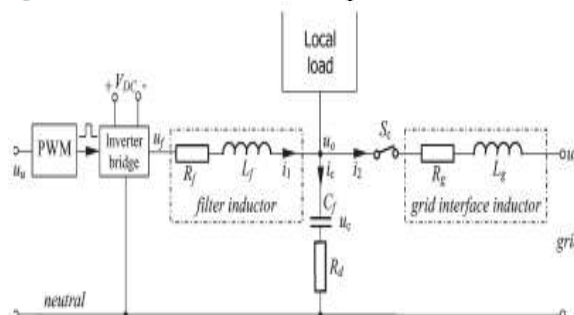


Fig. 1. Sketch of a grid-connected single-phase inverter with local loads.

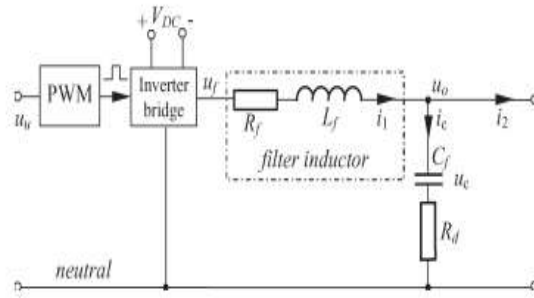


Fig. 2. Control plant P_u for the inner voltage

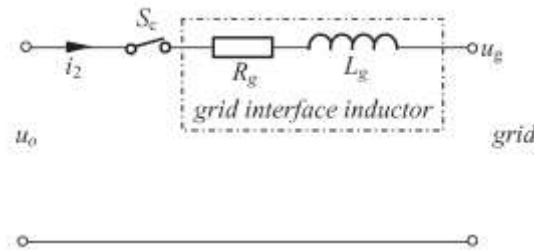


Fig. 3. Control plant P_i for the outer current controller.

regulate the grid current i_2 . According to the basic principles of control theory about cascaded control, if the dynamics of the outer loop is designed to be slower than that of the inner loop, then the two loops can be designed separately. As a result, the outer-loop controller can be designed under the assumption that the inner loop is already in the steady state, i.e., $u_o = u_{ref}$. It is also worth stressing that the current controller is in the outer loop and the voltage controller is in the inner loop. This is contrary to what is normally done. In this paper, both controllers are designed using the H_∞ repetitive control strategy because of its excellent performance in reducing THD.

The main functions of the voltage controller are the following: to deal with power quality issues of the inverter local load voltage even under unbalanced and/or nonlinear local loads, to generate and dispatch power to the local load, and to synchronize the inverter with the grid. When the inverter is synchronized and connected with the grid, the voltage and the frequency are determined by the grid.

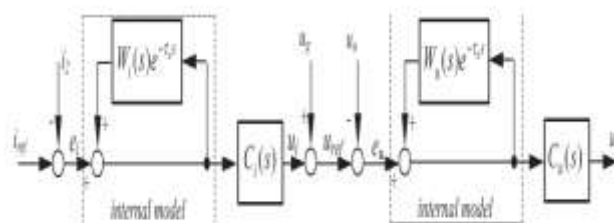


Fig. 4. Proposed cascaded current-voltage controller for inverters, where both controllers adopt the H_∞ repetitive strategy.

The main function of the outer-loop current controller is to exchange a clean current with the grid

even in the presence of grid voltage distortion and/or nonlinear (and/or unbalanced for three-phase applications) local loads connected to the inverter. The current controller can be used for over current protection, but normally, it is included in the drive circuits of the inverter bridge. A phase-locked loop (PLL) can be used to provide the phase information of the grid voltage, which is needed to generate the current reference i_{ref} (see Section V for an example). As the control structure described here uses just one inverter connected to the system and the inverter is assumed to be powered by a constant dc voltage source, no controller is needed to regulate the dc-link voltage (otherwise, a controller can be introduced to regulate the dc-link voltage).

Another important feature is that the grid voltage u_g is fed forward and added to the output of the current controller. This is used as a synchronization mechanism, and it does not affect the design of the controller, as will be seen later.

III. DESIGN OF THE VOLTAGE CONTROLLER

The design of the voltage controller will be outlined hereinafter, following the detailed procedures proposed in [16]. A prominent feature different from what is known is that the control plant of the voltage controller is no longer the whole LCL filter but just the LC filter, as shown in Fig. 2.

A. State-Space Model of the Plant p_u

The corresponding control plant shown in Fig. 2 for the voltage controller consists of the inverter bridge and the LC filter (L_f and C_f). The filter inductor is modeled with a series winding resistance. The PWM block, together with the inverters is modeled by using an average voltage approach with the limits of the available dc-link voltage [15] so that the average value of u_f over a sampling period is equal to u_u . As a result, the PWM block and the inverter bridge can be ignored when designing the controller.

The filter inductor current i_1 and the capacitor voltage u_c are chosen as state variables $x_u = [i_1 \quad u_c]^T$. The external input $w_u = [i_2 \quad u_{ref}]^T$ consists of the grid current i_2 and the reference Voltage u_{ref} . The control input is u_u . The output signal from the plant p_u is the tracking error $e_u = u_{ref} - u_0$ where $u_0 = u_c + R_d(i_1 - i_2)$ is the inverter local load voltage. The plant P_u can be described by the state equation,

$$\dot{x}_u = A_u x_u + B_{u1} w_u + B_{u2} u_u \quad (1)$$

and the output equation

$$y_u = e_u = C_{u1} x_u + D_{u1} w_u + D_{u2} u_u \quad (2)$$

With

$$A_u = \begin{bmatrix} -\frac{R_f + R_d}{L_f} & -\frac{1}{L_f} \\ \frac{1}{C_f} & 0 \end{bmatrix}$$

$$B_{u1} = \begin{bmatrix} \frac{R_d}{L_f} & 0 \\ -\frac{1}{C_f} & 0 \end{bmatrix} \quad B_{u2} = \begin{bmatrix} 1 \\ L_f \\ 0 \end{bmatrix}$$

$$C_{u1} = [-R_{d1} \quad -1]$$

$$D_{u1} = [R_d \quad 1] \quad D_{u2} = 0$$

The corresponding plant transfer function is then

$$p_u = \begin{bmatrix} A_u & B_{u1} & B_{u2} \\ C_{u1} & D_{u1} & D_{u2} \end{bmatrix} \quad (3)$$

In order to guarantee the stability of the inner voltage loop, an H_∞ control problem, as shown in Fig. 5, is formulated to minimize the H_∞ norm of the transfer function $\bar{T}_{\tilde{z}_u, \tilde{w}_u} = F_1(p_u, c_u)$ from $\tilde{w}_u = [v_u \ w_u]^T$ to $\tilde{z}_u = [z_{u1} \ z_{u2}]^T$, after opening the local positive feedback loop of the internal model and introducing weighting parameters ξ_u and μ_u . The closed loop system can be represented as

$$\begin{bmatrix} z_u \\ y_u \end{bmatrix} = p_u \begin{bmatrix} w_u \\ u_u \end{bmatrix} \\ u_u = C_u y_u \quad (4)$$

Where P_u is the generalized plant and C_u is the voltage controller to be designed. The generalized plant P_u consists of the original

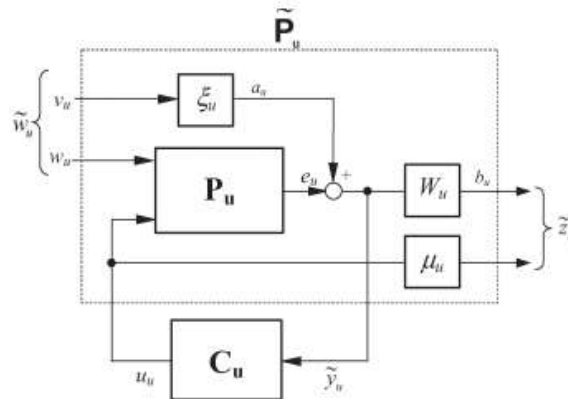


Fig. 5. Formulation of the H_∞ control problem for the voltage controller.

plant P_u , together with the low-pass filter

$$w_u = \begin{bmatrix} A_{wu} & B_{wu} \\ C_{wu} & D_{wu} \end{bmatrix}, \text{ which is the internal model for repetitive control. The details of}$$

how to select W_u can be found in [16] and [18]. A weighting parameter ξ_u is added to adjust the relative importance of v_u with respect to w_u , and another weighting parameter μ_u is added to adjust the relative importance of u_u with respect to b_u . The parameters ξ_u and μ_u also play a role in guaranteeing the stability of the system; see

more details in [16] and [18]. It can be found out that the generalized plant P_u is realized as

$$\tilde{P}_u = \left[\begin{array}{cc|cc|c} A_u & 0 & 0 & B_{u1} & B_{u2} \\ B_{w_u} C_{u1} & A_{w_u} & B_{w_u} \xi_u & B_{w_u} D_{u1} & B_{w_u} D_{u2} \\ \hline D_{w_u} C_{u1} & C_{w_u} & D_{w_u} \xi_u & D_{w_u} D_{u1} & D_{w_u} D_{u2} \\ 0 & 0 & 0 & 0 & \mu_u \\ \hline C_{u1} & 0 & \xi_u & D_{u1} & D_{u2} \end{array} \right] \quad (5)$$

The controller C_u can then be found according to the generalized plan P_u using the H_∞ control theory, e.g., by using the function `hin f syn` provided in MATLAB.

IV. DESIGN OF THE CURRENT CONTROLLER

As explained before, when designing the outer-loop current controller, it can be assumed that the inner voltage loop tracks the reference voltage perfectly, i.e., $u_o = u_{ref}$. Hence, the control plant for the current loop is simply the grid inductor, as shown in Fig. 3. The formulation of the H_∞ control problem to design the H_∞ compensator C_i is similar to that in the case of the voltage control loop shown in Fig. 5 but with a different plant P_i and the subscript u replaced with i .

A. State-Space Model of the Plant P_i

Since it can be assumed that $u_o = u_{ref}$, there is $u_o = u_g + u_i$ or $u_i = u_o - u_g$ from Figs. 3 and 4, i.e., u_i is actually the voltage dropped on the grid inductor. The feed forwarded grid voltage u_g provides a base local load voltage for the inverter. The same voltage u_g appears on both sides of the grid interface inductor L_g , and it does not affect the controller design. Hence, the feed forwarded voltage path can be ignored during the design process. This is a very important feature. The only contribution that needs to be considered during the design process is the output u_i of the repetitive current controller.

TABLE 1
PARAMETERS OF THE INVERTER

Parameter	Value	Parameter	Value
L_f	150 μ H	R_f	0.045 Ω
L_g	450 μ H	R_g	0.135 Ω
C_f	22 μ F	R_d	1 Ω

The grid current i_2 flowing through the grid interface inductor L_g is chosen as the state variable $x_i = i_2$. The external input is $w_i = i_{ref}$, and the control input is u_i . The output signal from the plant P_i is the tracking error $e_i = i_{ref} - i_2$, i.e., the difference between the current reference and the grid current. The plant P_i can then be described by the state equation

$$\dot{x}_i = A_i x_i + B_{i1} w_i + B_{i2} u_i$$

and the output equation

$$y_i = e_i = C_{i1} x_i + D_{i1} w_i + D_{i2} u_i$$

Where

$$A_i = -\frac{R_g}{L_g} \quad B_{i1} = 0 \quad B_{i2} = \frac{1}{L_g}$$

$$C_{i1} = -1 \quad D_{i1} = 1 \quad D_{i2} = 0.$$

The corresponding transfer function of P_i is

$$P_i = \left[\begin{array}{c|cc} A_i & B_{i1} & B_{i2} \\ \hline C_{i1} & D_{i1} & D_{i2} \end{array} \right].$$

B. Formulation of the Standard H_∞ Problem

Similarly, a standard H_∞ problem can be formulated as in the case of the voltage controller shown in Fig. 5, replacing the subscript u with i. The resulting generalized plant can be obtained

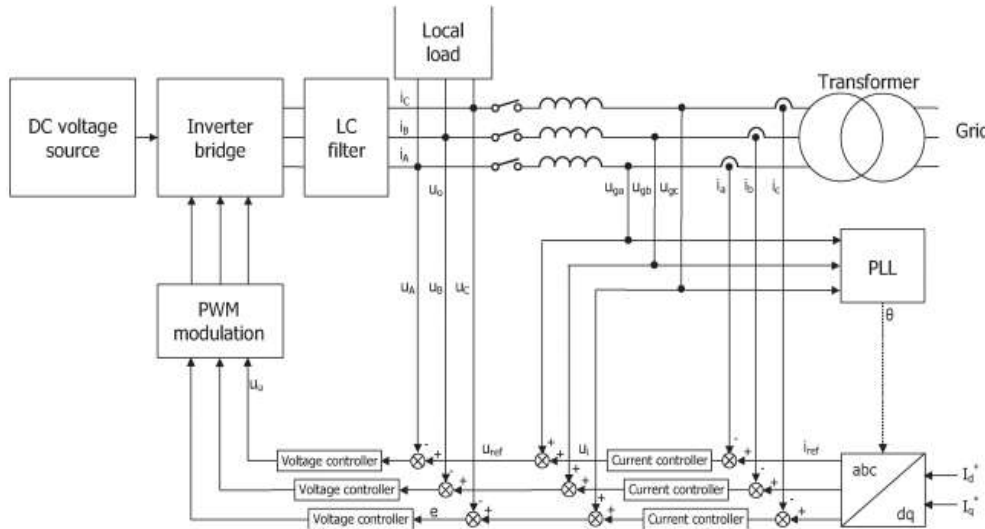


Fig. 6. Sketch of a grid-connected three-phase inverter using the proposed strategy.

with weighting parameters ξ_i and μ_i and low-pass filter $\begin{bmatrix} A_{wi} & B_{wi} \\ C_{wi} & D_{wi} \end{bmatrix}$, which can be selected similarly as the corresponding ones for the voltage controller. The controller C_i can then be found according to the generalized plant P_i using the H_∞ control theory, e.g., by using the function `hin f` syn provided in MATLAB.

V. SIMULATION RESULTS

The above-designed controller was implemented to evaluate its performance in both stand-alone and grid-connected modes with different loads. The seamless transfer of the operation modes was also carried out. The H_∞ repetitive current controller was replaced with a proportional-resonant (PR) current controller for comparison in the grid-connected mode. In the stand-alone mode, since the grid current reference was set to zero and the circuit breaker was turned off (which means that the current controller was not functioning), the experimental results with both the repetitive current controller and the PR current controller are similar, and hence, no comparative results are provided for the stand-alone mode. The PR controller was designed according to [31] with the plant used in Section IV-A as

$$C_{i-PR}(s) = 0.735 + \frac{20s}{s^2 + 10000\pi^2}$$

A. In the Stand-Alone Mode

The voltage reference was set to the grid voltage (the inverter is synchronized and ready to be connected to the utility grid). The evaluation of the proposed controller was made for a resistive load ($R_A=R_B=R_C=12\Omega$), a nonlinear load (a three-phase uncontrolled rectifier loaded with an LC filter with $L=150\mu\text{H}$ and $C=1000\mu\text{F}$ and a resistor $R=20\Omega$), and an unbalanced load ($R_A=R_C=12\Omega$ and $R_B=\infty$). The local load voltage u_A , voltage reference u_{ref} , and filter inductor

current i_a are shown in Fig. 7(a). Fig. 7(b) shows the spectra of the inverter local load voltage and the local load current. The recorded local voltage THD was 1.27%, while the grid voltage THD was 1.8%. Since the utility grid voltage was used as the reference, it is worth mentioning that the quality of the inverter local load voltage was better than that of the grid voltage, even without using an active filter.

B. In the Grid-Connected Mode

The current reference of the grid current i_d^* was set at 2 A (corresponding to 1.41 A rms), after connecting the inverter to the grid. The reactive power was set at 0 var ($i_q^*=0$). The resistive, nonlinear, and unbalanced loads used in the previous section were used again. Moreover, the case without a local load was carried out as well. Finally, the transient responses of the system were evaluated.

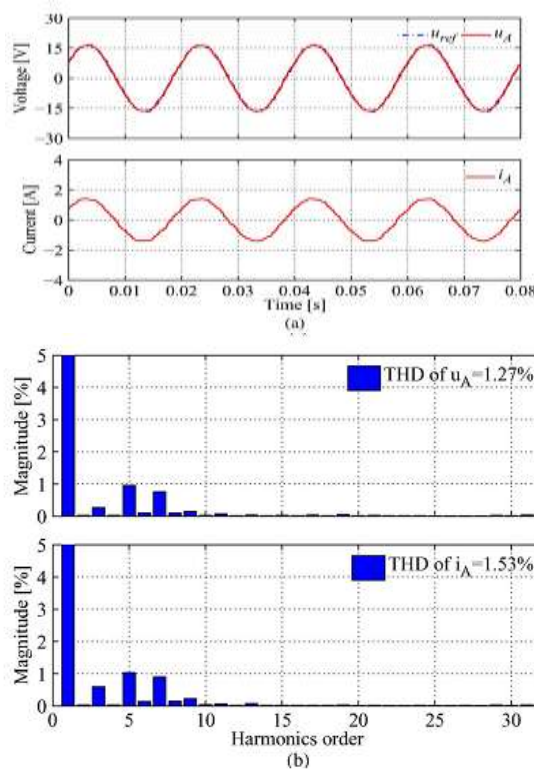


Fig. 7. Stand-alone mode with a resistive load. (a) (Upper) u_A and its reference u_{ref} and (lower) current i_A . (b) (Upper) Voltage THD and (lower) current THD

VI. CONCLUSION

The cascaded current-voltage control strategy has been proposed for inverters in micro-grids. It consists of an inner voltage loop and an outer current loop and offers excellent performance. The proposed strategy significantly improves the THD of the inverter local load voltage and the grid current at the same time. The controllers are designed using the H_∞ repetitive control in this paper but can be designed using other approaches as well. The proposed strategy also achieves seamless transfer between the stand-alone and the grid-connected modes. The strategy can be used for single-phase systems or three-phase systems. As a result, the nonlinear harmonic currents and unbalanced local load currents are all contained locally and do not affect the grid. Experimental

results under voltage controller. (b) PR-current- H_{∞} -repetitive voltage controller various scenarios have demonstrated the excellent performance of the proposed strategy.

REFERENCES

- [1] N. Hatziargyriou, H. Asano, R. Iravani, and C. Marnay, "Microgrids," *IEEE Power Energy Mag.*, vol. 5, no. 4, pp. 78-94, Jul./Aug. 2007.
- [2] F. Katiraei, R. Iravani, N. Hatziargyriou, and A. Dimeas, "Microgrids management," *IEEE Power Energy Mag.*, vol. 6, no. 3, pp. 54-65, May/Jun. 2008.
- [3] C. Xiarnay, H. Asano, S. Papathanassiou, and G. Strbac, "Policymaking for microgrids," *IEEE Power Energy Mag.*, vol. 6, no. 3, pp. 66-77, May/Jun. 2008.
- [4] Y. Mohamed and E. El-Saadany, "Adaptive decentralized droop controller to preserve power sharing stability of paralleled inverters in distributed generation micro-grids," *IEEE Trans. Power Electron.*, vol. 23, no. 6, pp. 2806-2816, Nov. 2008.
- [5] Y. Li and C.-N. Kao, "An accurate power control strategy for power electronics-interfaced distributed generation units operating in a low \Trans. Power Electron., vol. 25, no. 1, pp. 6-15, Jan. 2010.
- [6] C.-L. Chen, Y. Wang, J.-S. Lai, Y.-S. Lee, and D. Martin, "Design of parallel inverters for smooth mode transfer micro-grid applications," *IEEE*
- [7] J. Guerrero, J. Vasquez, J. Matas, M. Castilla, and L. de Vicuna, "Control strategy for flexible micro-grid based on parallel line-interactive UPS systems," *IEEE Trans. Ind. Electron.*, vol. 56, no. 3, pp. 726-736, Mar. 2009.
- [8] Z. Yao, L. Xiao, and Y. Yan, "Seamless transfer of single-phase gridinteractive inverters between grid-connected and stand-alone modes," *IEEE Trans. Power Electron.*, vol. 25, no. 6, pp. 1597-1603, Jun. 2010.
- [9] Q.-C. Zhong and G. Weiss, "Synchro converters: Inverters that mimic synchronous generators," *IEEE Trans. Ind. Electron.*, vol. 58, no. 4, pp. 1259-1267, Apr. 2011.
- [10] Q.-C. Zhong, "Robust droop controller for accurate proportional load sharing among inverters operated in parallel," *IEEE Trans. Ind. Electron.*, vol. 60, no. 4, pp. 1281-1290, Apr. 2013.
- [11] M. Prodanovic and T. Green, "High-quality power generation through distributed control of a power park micro-grid," *IEEE Trans. Ind. Electron.*, vol. 53, no. 5, pp. 1471-1482, Oct. 2006.
- [12] Y. W. Li, D. Vilathgamuwa, and P. C. Loh, "A grid-interfacing power quality compensator for three-phase three-wire microgrid applications," *IEEE Trans. Power Electron.*, vol. 21, no. 4, pp. 1021-1031, Jul. 2006.